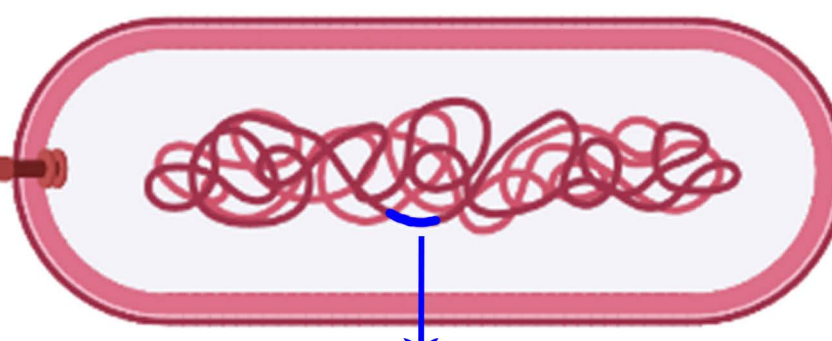
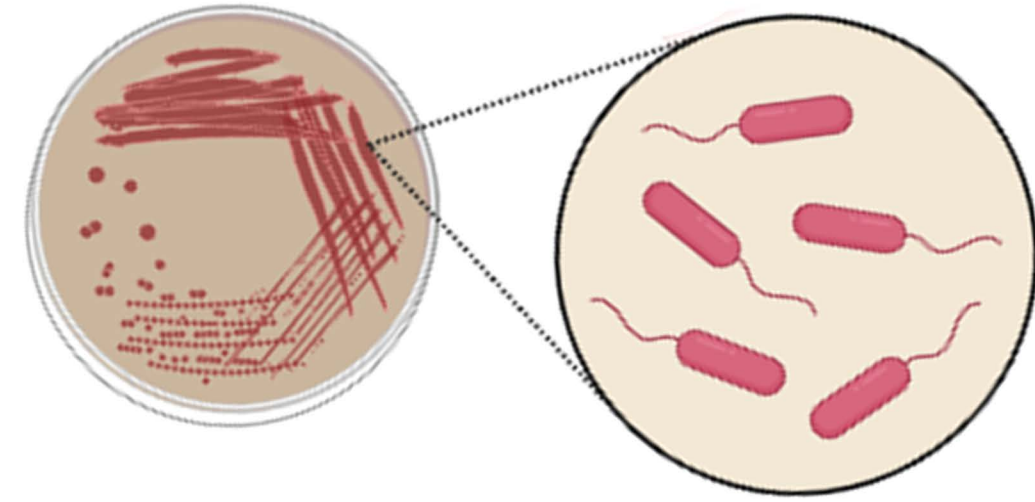
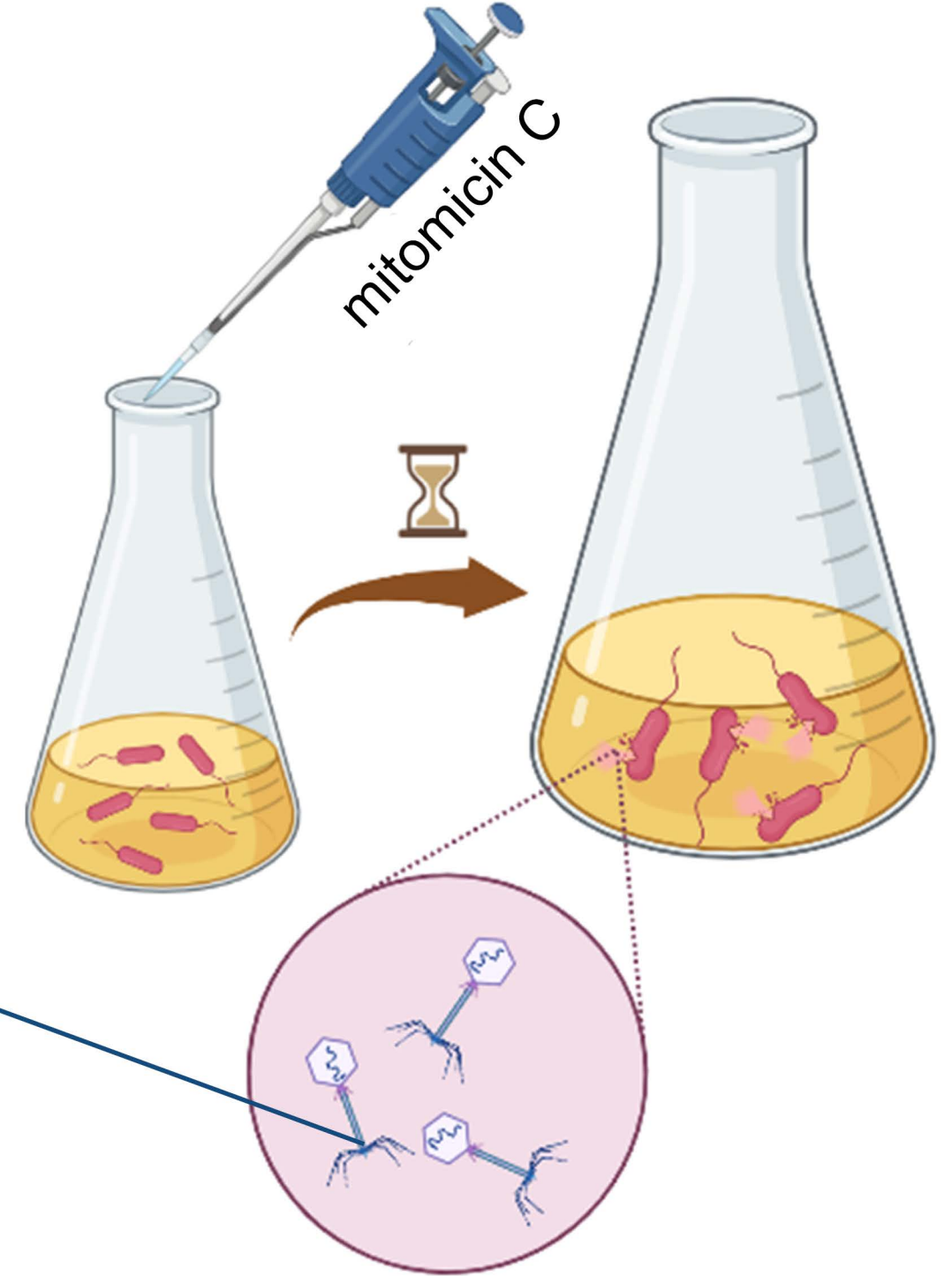
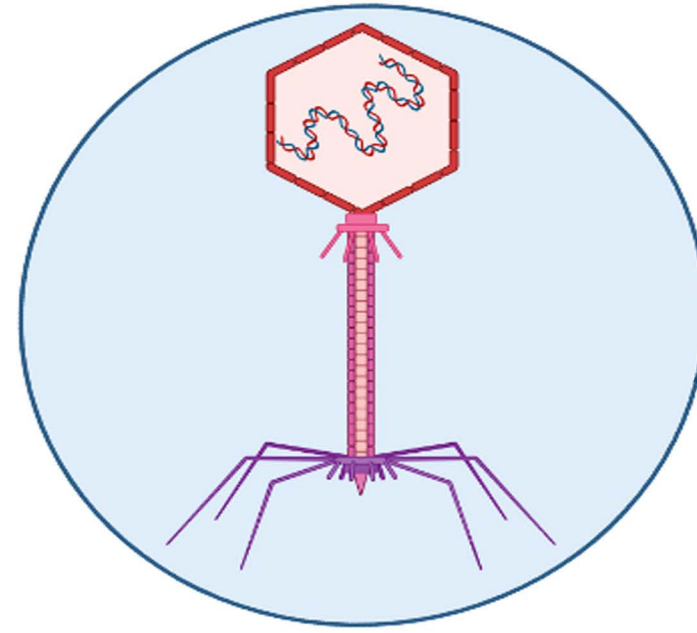


B. cereus VKM B-13

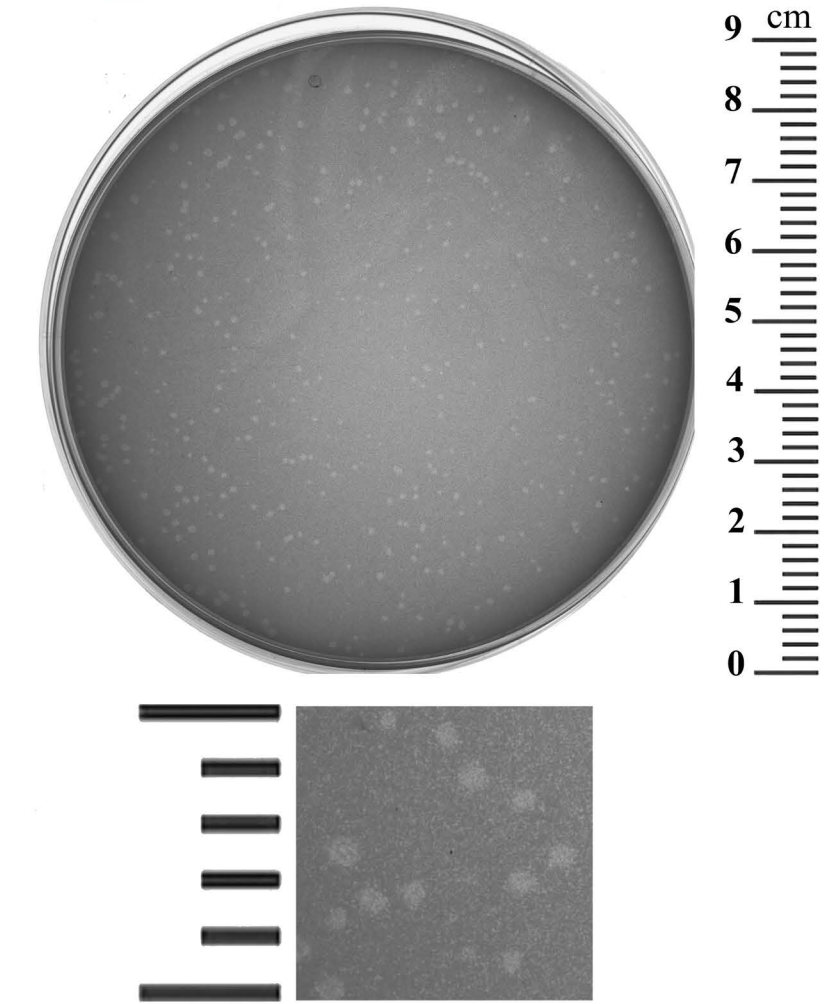
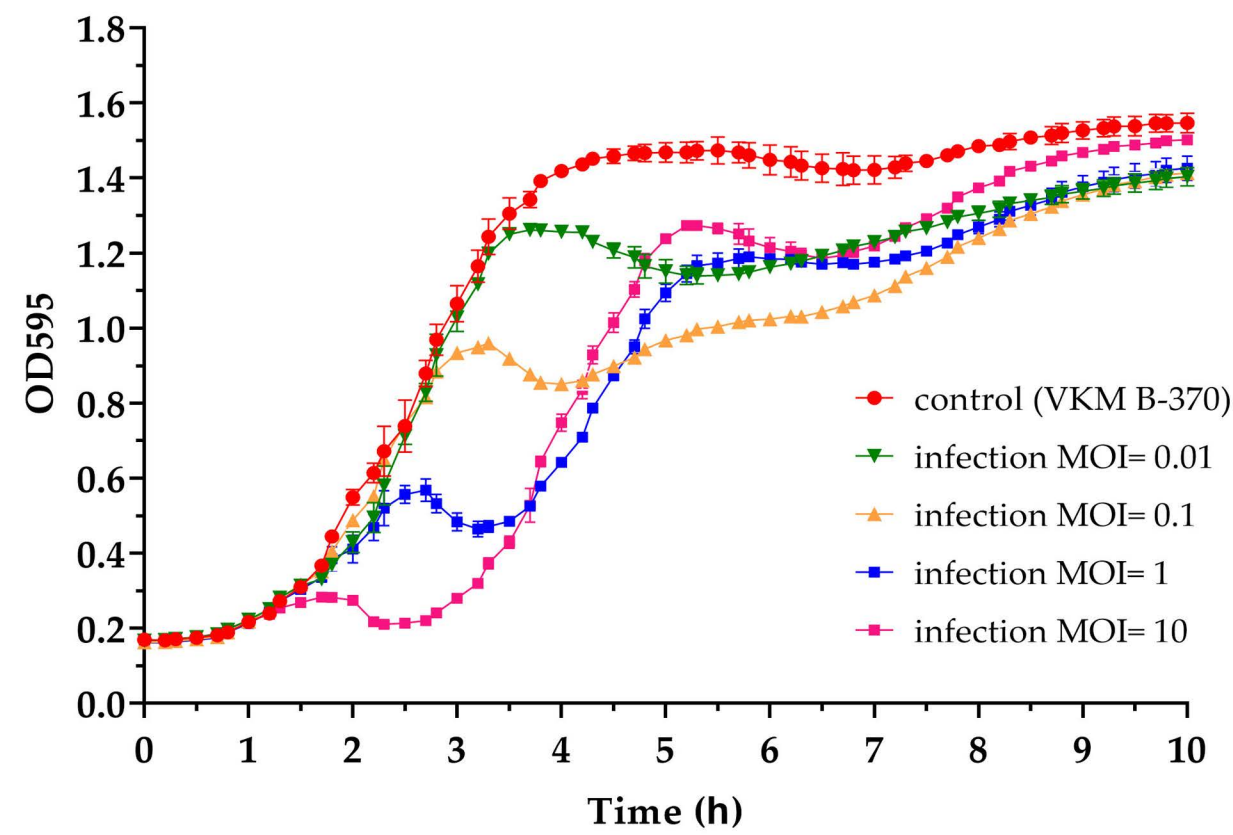
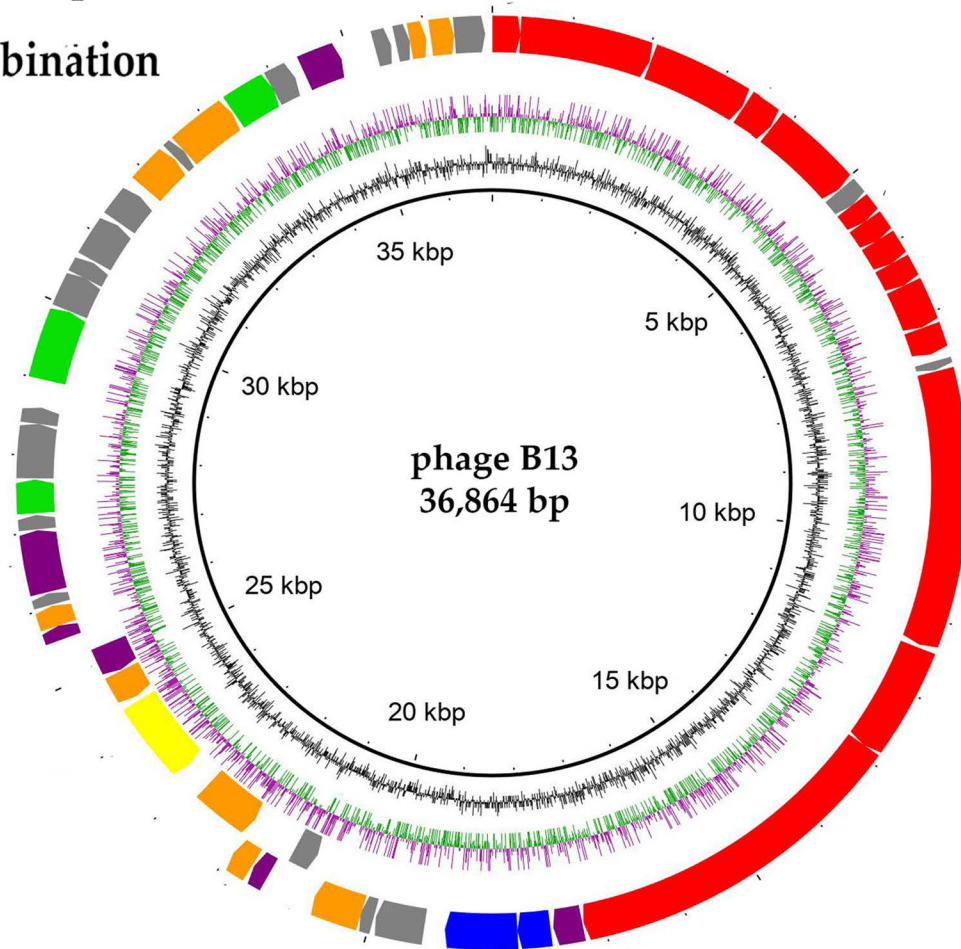


prophage

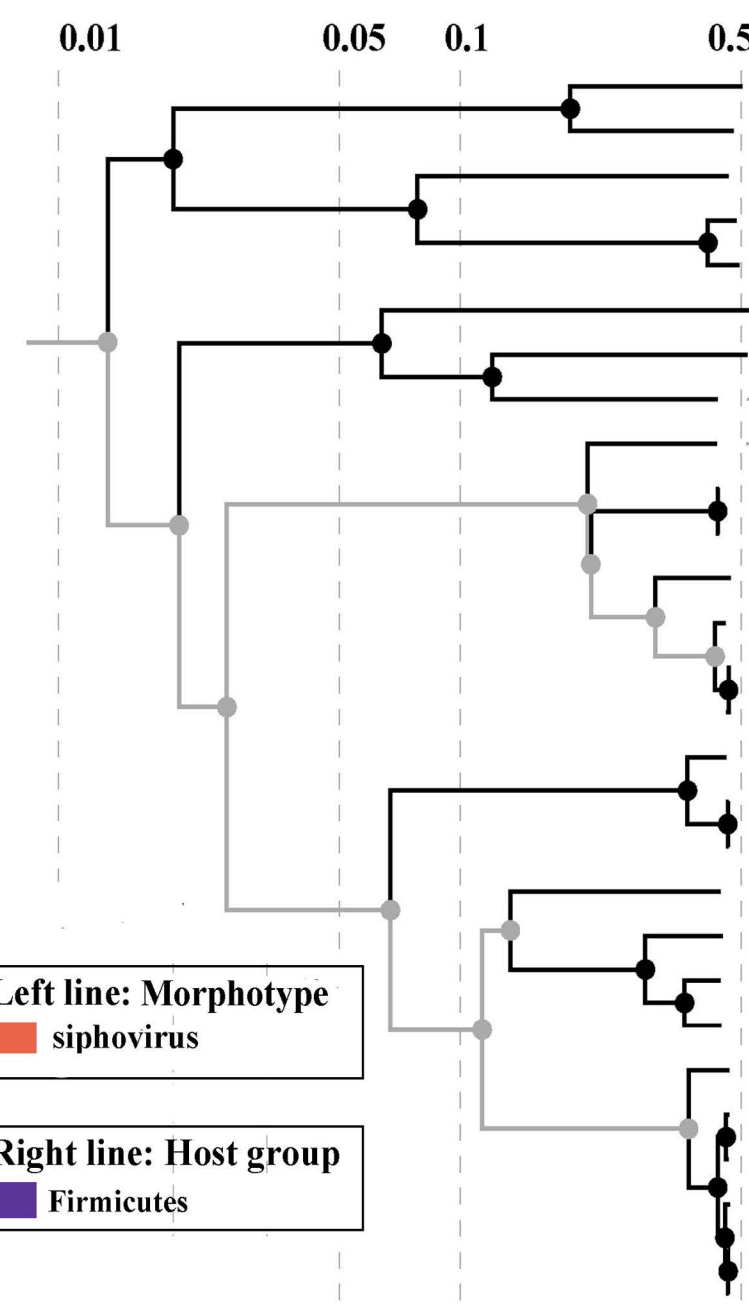
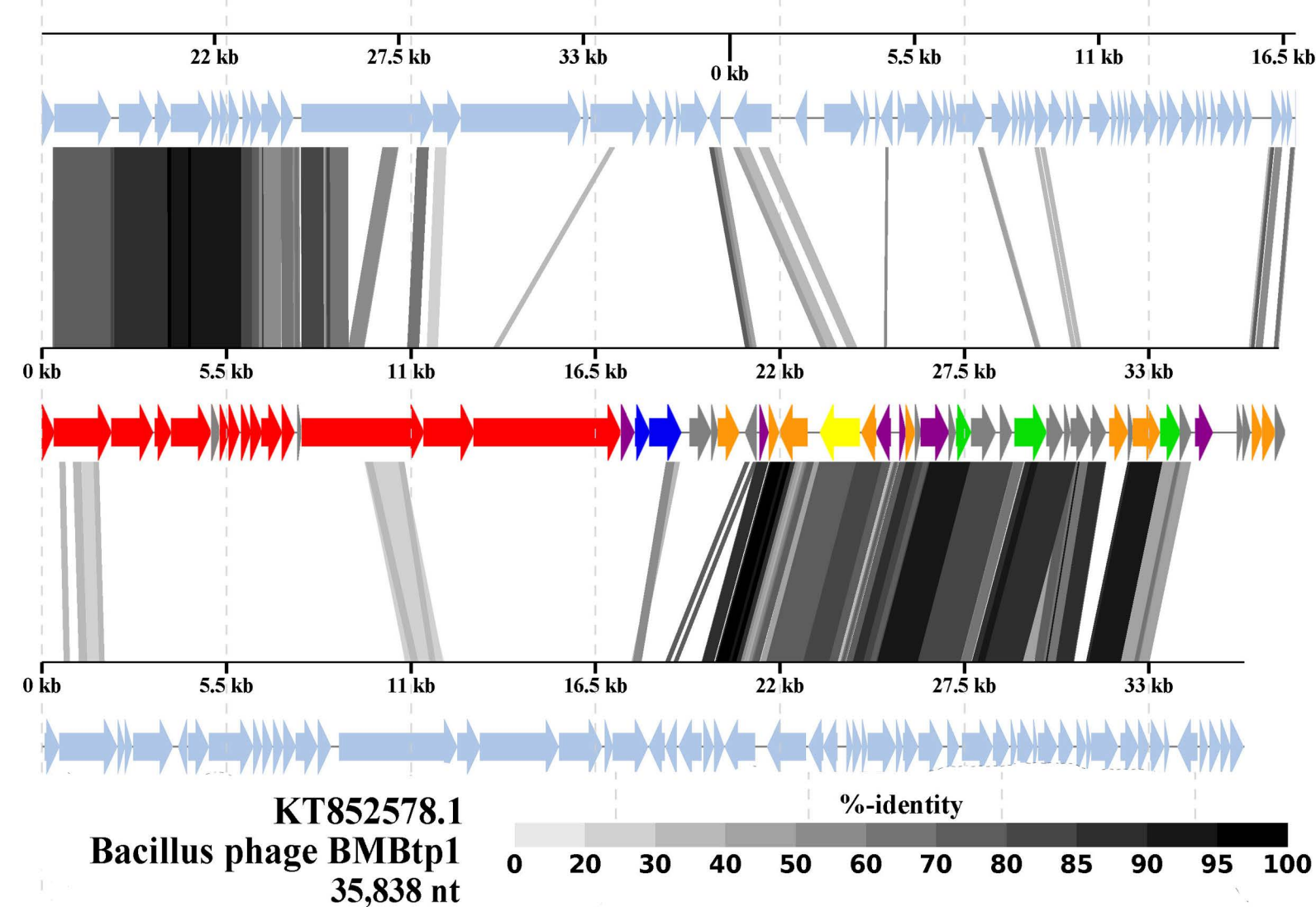


Bacteriophage Bunatrivirus B13

- DNA packaging and structural proteins
- DNA replication and recombination
- Host cell lysis
- Prophage maintenance
- Transcription regulation
- Other functions
- Unknown function
- GC Skew
- GC Skew(-)
- GC Skew(+)
- GC content



OK500002.1
Bacillus phage vB_BanS_Athena
37,369 nt



- Bacillus phage vB_BtS_BMBtp14 (NC_048640) [50,740 nt]
- Bacillus phage vB_BtS_B83 (NC_048762) [49,952 nt]
- Bacillus phage phi4B1 (NC_028886) [38,663 nt]
- Bacillus phage vB_BtS_BMBtp2 (NC_019912) [36,932 nt]
- Bacillus phage TP21-L (NC_011645) [37,456 nt]
- Bacillus phage vB_BanS_Athena (OK500002.1) [37,369 nt]
- Bacillus phage BMBtp1 (KT852578.1) [35,838 nt]
- ★ Bacillus phage B13 (OP066531.1) [36,864 nt]
- Bacillus phage phi4J1 (NC_029008) [41,486 nt]
- Staphylococcus phage SpaA1 (NC_018277) [42,784 nt]
- Bacillus phage BceA1 (NC_048628) [42,932 nt]
- Bacillus phage vB_BtS_BMBtp3 (NC_028748) [51,366 nt]
- Bacillus phage Waukesha92 (NC_025424) [45,648 nt]
- Bacillus phage vB_BthS-TP21T (MK843319.1) [51,949 nt]
- Bacillus phage phiS58 (KT970646.1) [46,635 nt]
- Bacillus phage vB_BceS-MY192 (NC_048633) [44,696 nt]
- Bacillus phage PFEFR-5 (NC_031055) [43,773 nt]
- Bacillus phage PFEFR-4 (NC_048641) [43,223 nt]
- Bacillus phage 9AX_2 (MF417893.1) [43,032 nt]
- Bacillus phage phiS3501 (NC_019502) [44,401 nt]
- Bacillus phage phiCM3 (NC_023599) [38,772 nt]
- Bacillus phage BtCS33 (NC_018085) [41,992 nt]
- Bacillus phage AP631 (MK085976.1) [39,549 nt]
- Bacillus phage WBeta (NC_007734) [40,867 nt]
- Bacillus phage Fah (NC_007814) [37,974 nt]
- Bacillus phage Gamma isolate d'Herelle (DQ289556) [37,373 nt]
- Bacillus phage Gamma (NC_007458) [37,253 nt]
- Bacillus phage Cherry (DQ222851) [36,615 nt]