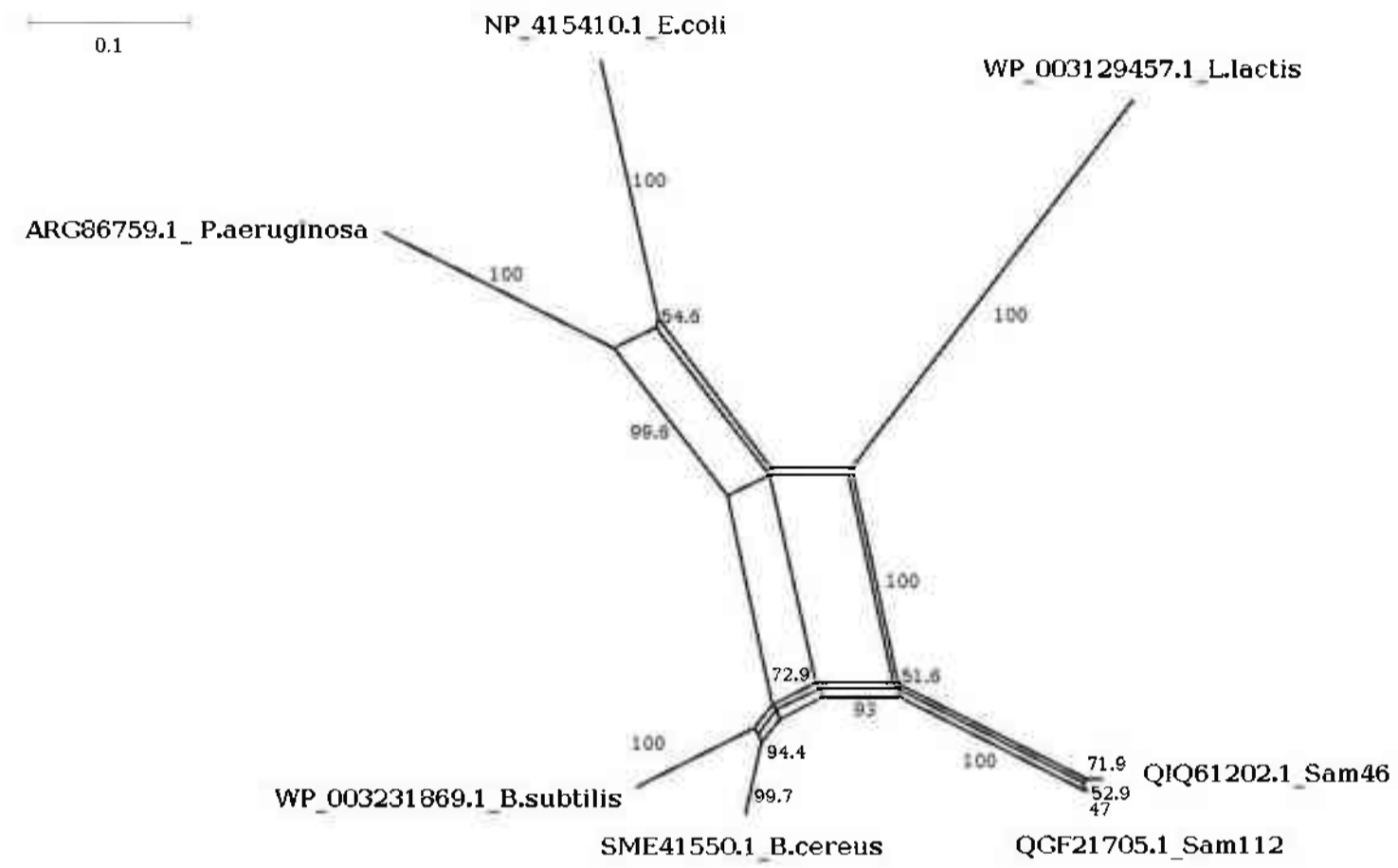
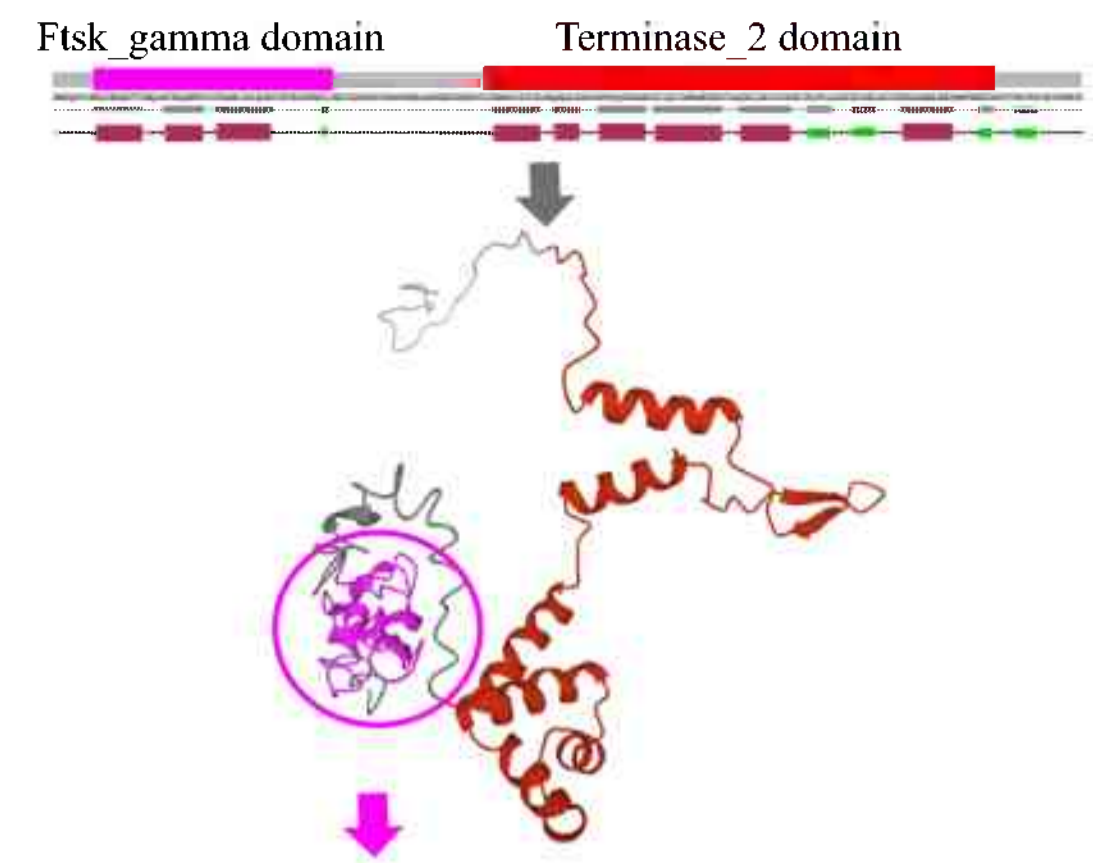
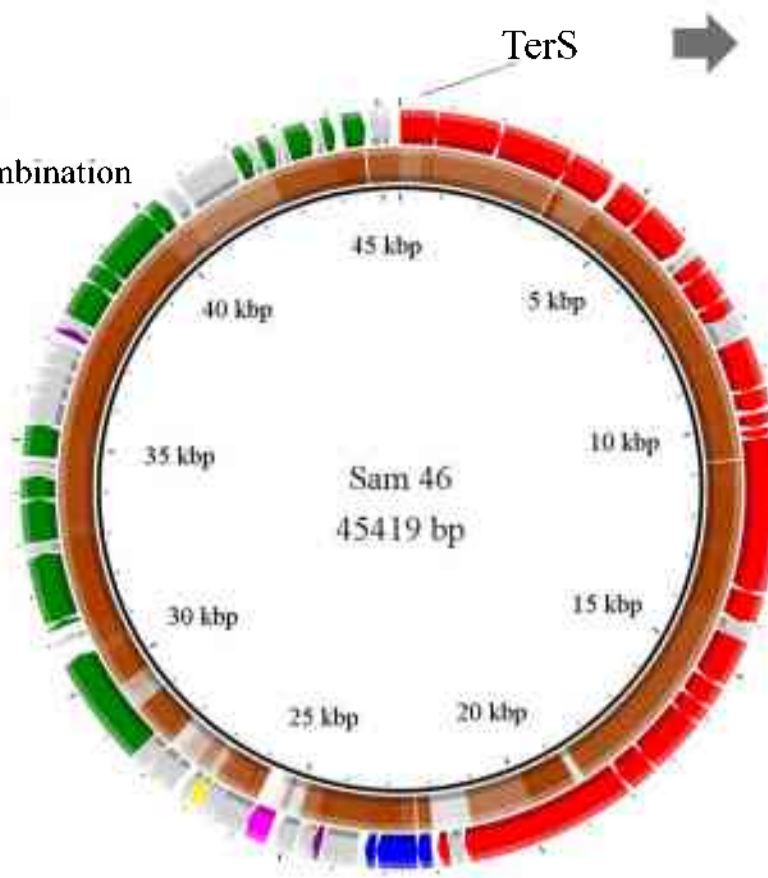


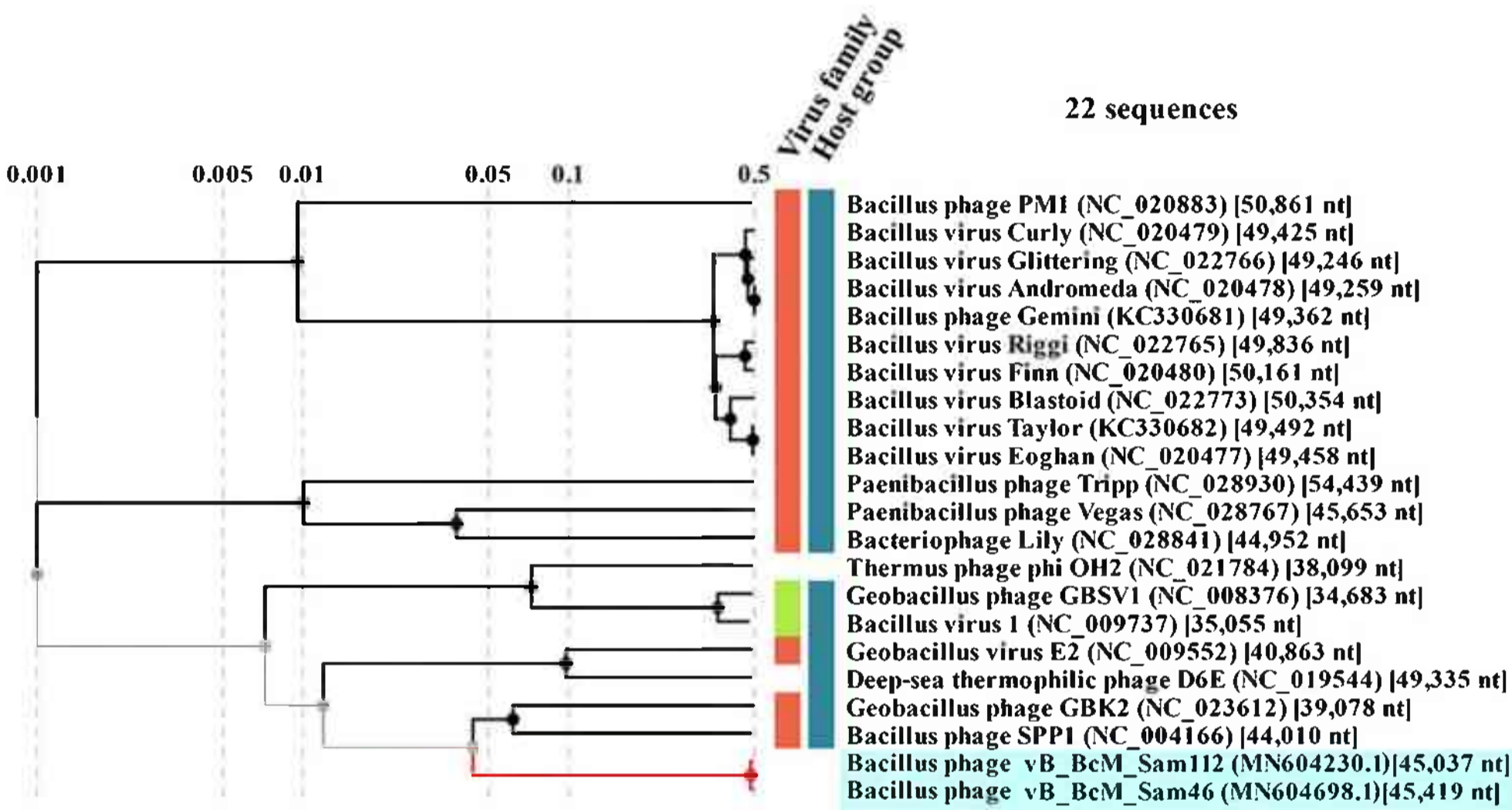
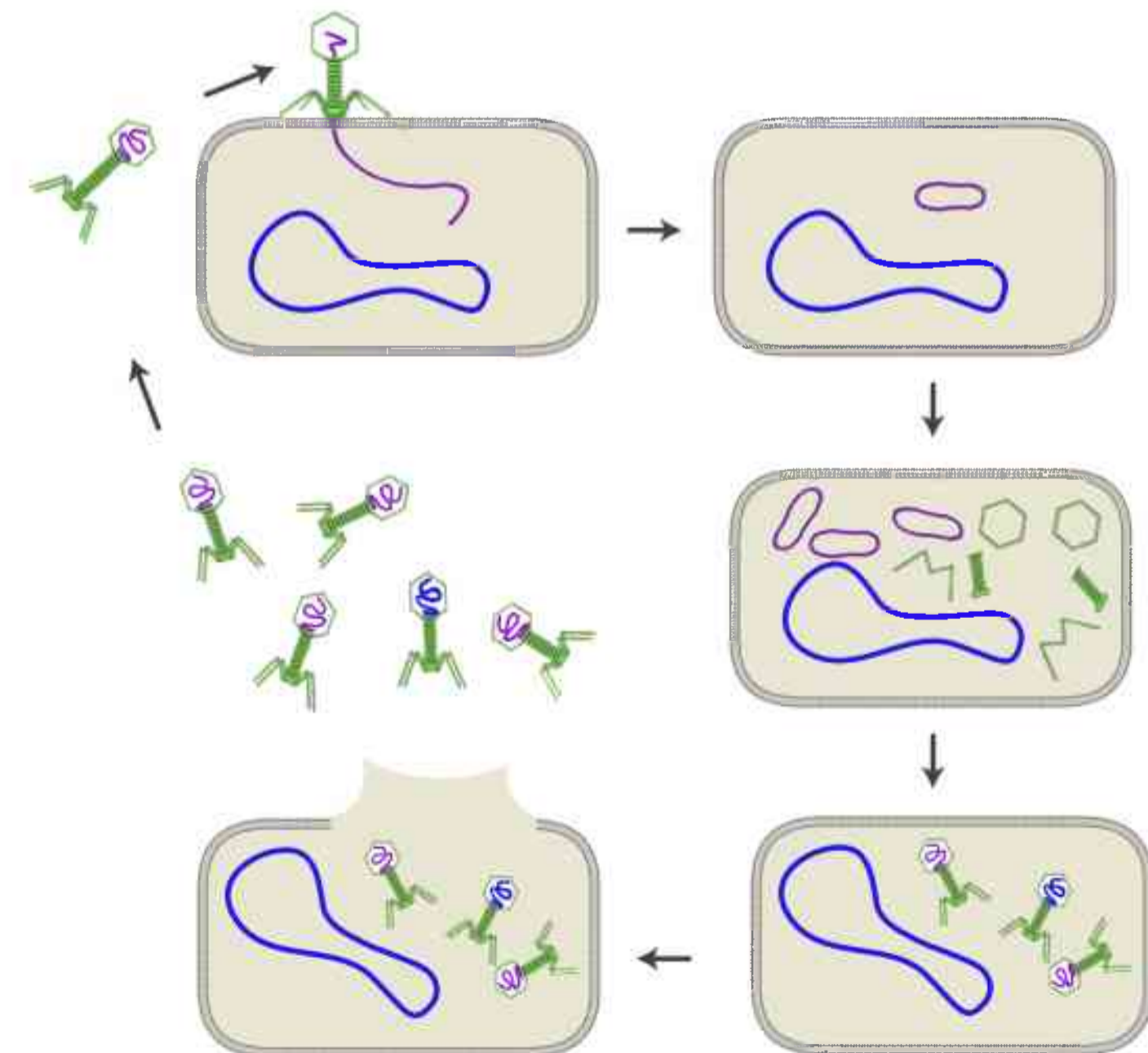
Bacillus phages Sam46

- DNA packaging and structural genes
- DNA metabolism, replication, recombination
- Host cell lysis
- Excision
- Other function
- Unknown function

- Sam 112
- 100% identity
  - 90% identity
  - 80% identity



Generalized transduction



- Left line: Virus family
- Siphoviridae (16)
  - Myoviridae (2)
- Right line: Host group
- Firmicutes (19)

